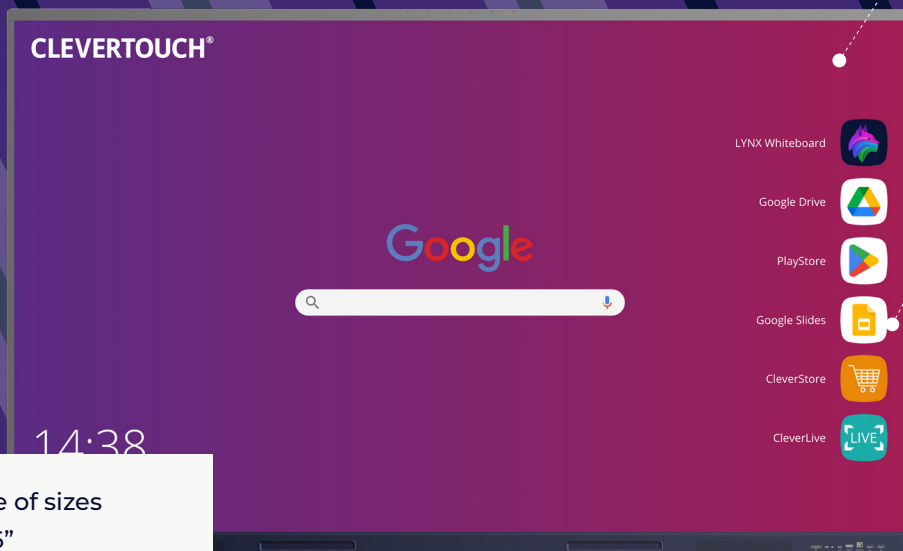


IMPACT LUX

The perfect all-around solution
for the modern classroom

Featuring high precision technology, LYNX Whiteboard and
Cleverstore – IMPACT LUX helps save time lesson planning with
lots of resources and learning activities.



Antibacterial glass

Keep germs at bay with state-of-the-art micro antibacterial glass.

Google Managed Services

Access the Google Play Store and Google Classroom. Use apps such as Google Drive, Docs, Sheets and Slides.

Available in a range of sizes
65" | 75" | 86"

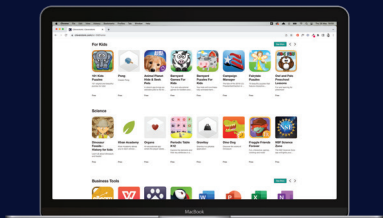
Software included at no extra cost



CLEVERSHARE®

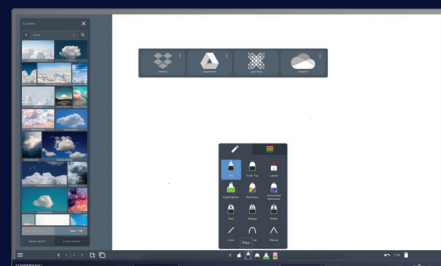


CLEVERMDM®



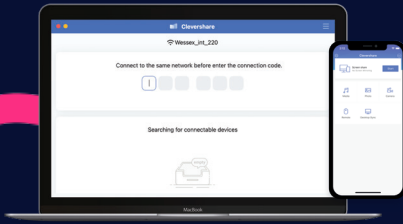
CLEVERSTORE®

Choose from hundreds of apps at no extra cost. Cleverstore has apps in multiple languages and for all age groups and subjects. No adverts, no in-app purchases, no hassle.

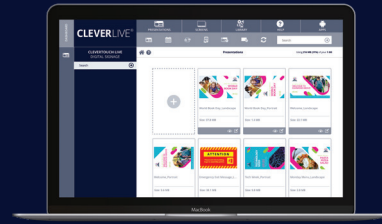


LYNX
whiteboard

LYNX Whiteboard is a free-to-use lesson building app, enabling student collaboration. The most dynamic, intuitive user experience of any whiteboard



Any device can download the Clevershare app and connect instantly by typing in the code on the Clevertouch screen. Clevershare App is free to download and compatible with Android, Windows, iOS, and Chrome devices.



CleverLive controls all of your Clevertouch products from one central place. It is the software platform that enables the creation, deployment and management of content deployed across one or multiple displays. CleverLive is a cloud management platform and is compatible with any device.

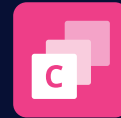
Key Features



Designed for blended learning



LYNX Whiteboard lesson creation app



Cleverstore free app store



Clevershare screen mirroring



Remote management MDM



Customise your home screen



Full digital signage capabilities



Compatible with Google Classroom and Microsoft 365

What's New?



Anti Bacterial Glass



HPIR Touch Frame, Palm Rejection



Top Mounted USB-C and USB-C Out



Intergrated NFC/RFID



Google Enterprise Partner



8GB Ram & 128GB ROM



Android 13



2x 20w front facing
2x 10w sub woofer

Display Panel

Diagonal Size	65" 4K, 75" 4K, 86" 4K
Screen Type	LCD
Aspect Ratio	16:9
Display Colours	1.07 Billion (10 bit)
Resolution	4K UHD (3840x2160)
Response Time	TBD
Refresh Rate	60Hz
LCD Viewing Angle	178°
Brightness	450 cd/m2
Contrast Ratio	1200:1
Dynamic Contrast Ratio	5000:1
Glass Hardness	AG Tempered Glass - Mohs Level 7
Glass Thickness	3mm
Glass Type	TBD
Main Board	RK3588
Life of Screen	50,000 Hours
NTSC	TBD

Interactivity

Writing Technology	High Precision IR Technology
Continuous Touch Points	40
Touch Resolution	32768x32768px
Response Time	≤10ms
Touch Accuracy	±1mm
Minimum Object Size	2mm
Touch Tool	Finger, passive pen, opaque objects
Simultaneous Writing	Yes
Ink In Tools	Yes - LYNX
Pens Included	2
Pen Type	Dual Recognition Stylus TBC
Pen Holder	Integrated magnetic pen holders
Pen Tip Diameter	TBD
Pen & Touch Differentiation	Yes
Pen Identities	2
Palm Rejection	Yes
Annotation Over Any Source	Yes
Classroom Essential Apps	Includes Whiteboard, Annotate, Timer, Media Players, Browser, PDF Reader, Screen Record, Spinner, Voting, Maths Tools
Compatibility*	Windows 10, Linux, Mac, Android, Chrome
Tracking Rate	TBD
Scan Rate	≥100hz
Gestures & Edge Swipes	Windows Supported, OSX With additional Driver

Connectivity

OPS Slot	1 - Intel Spec 80Pin
HDMI In	3
HDMI Out	1
USB-A 2.0	3
USB Touch (type B)	3
USB A 3.0 (faster data transfer)	4
USB C	4x USB C (3x Inputs, 1x Output)
LAN In (RJ45)	1
LAN Out (RJ45)	1
RS-232	Yes
Wake-on-Lan	Yes
Wireless Adapter	2.0 + WAP
Clevertouch WiFi Module	Yes
Bluetooth	Yes 5.0
DisplayPort In	1
Audio In	1 (3.5mm)
Optical Out	1 (coax)
Headphone	1 (3.5mm)
Total touch out ports	3
NFC Reader / Writer	Integrated
Camera	Optional Extra
Proximity Sensor	Yes
Array Mic	Yes
WiFi	IEEE 802.11a/b/g/n/ac (2.4 and 5 GHz bands)
WiFi Speed	Capable of speeds up to 433Mbps

Computing

Operating System	Android 13
System Version	LUX 13
RAM	8GB
Internal Storage	128GB
CPU	Quad Core A76 + Quad Core A55
GPU	Mali G610 MC4
Android Resolution	4K
Integrated LUX UI	Yes
System Architecture	TBC

Power

Power Requirements	100 - 240 ~ 50/60Hz 3.5A
Power Consumption (Normal)	TBD
Power Consumption (Standby)	TBD
Ultra Quiet Fanless Design	Yes

IMPACT LUX Specifications

Operating & Storage Environment

Operating Temperature	0° to 40°
Storage Temperature	-20° to 60°
Operating Humidity	10% to 90% RH
Storage Humidity	10% to 90% RH
Altitude	Below 5000 metres

Audio

Dual Front Facing, Bass Enhanced Speakers	2 x 20W Front Facing + 2x 10W Subwoofer
Audio Out	Yes
SPDIF / Fibre	Yes
Sound Channel	2.2
Line Array Microphone 6 (noise cancelling)	Yes
Super Wide Sound	Yes

IMPACT LUX Built-In Features

LYNX™ App With Online Lesson Planning	Yes
Cleverstore™ App Store For Education	Yes
Embedded Digital Signage	Yes
Clevershare™ Mirroring Any Device To The Board	Free for the life of the screen (touch back)
Integrated Personalised Accounts Profiles	Yes
Cloud Account Access	OneDrive and Google Drive
Embedded Room Booking	Yes
Whiteboard Annotation	Yes
Email Out Direct From Touchscreen	Yes
Scan QR Code For Saving Work	Yes
CleverLive – Instant Alert Messaging	Yes
Over-the-Air Updates	Yes
Remote Management Of Touchscreens (MDM)	5 years

Physical Spec

Panel Dimensions	TBD
Packed Dimensions	TBD
Net Weight	TBD
Packed Weight	TBD
VESA Mount Point	65" 600x400mm 75" 800x600mm 86" 800x600mm

Inside your Clevertouch Box

What's In The Box	<ul style="list-style-type: none"> (1) Clevertouch LUX (1) 1.5M Length HDMI Cable (1) 3M Length USB cable (A-B) (1) 1.5M USBC Cable (1) 3M Regional Power Cable (1) Remote Control (2) Batteries for Remote Control (2) Dual Recognition Stylus (1) User Guide (1) Quick Install Guide (1) Wireless Adapter 2.0 + WAP
-------------------	--

Warranty

Warranty term and upgrade options vary by region. Contact your local reseller or distributor for information and visit clevertouch.com/about/warranty

Compliance & Certification

Regulatory Certification	CE, FCC, UL, Energy Star & EEC
--------------------------	--------------------------------

